

MIN-EMISSIONS ROUND FLAME GAS BURNER

GLSF Series



BURNERS | FLARES | THERMAL OXIDIZERS | VAPOR CONTROL | RENTALS | AFTERMARKET



GLSF Min-Emissions Round Flame Gas Burners



Description

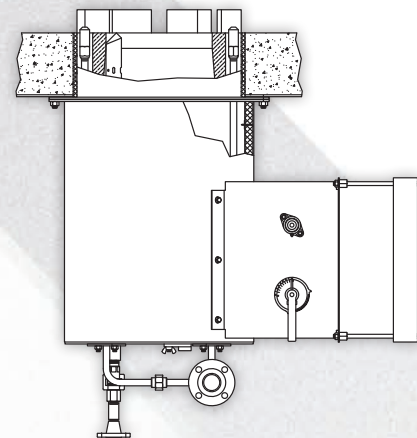
The ZEECO® GLSF Min-Emissions Burner is an ultra-low emissions round flame burner. Our design allows for a compact flame shape, making it a great choice for retrofit applications that require burners closely mounted together or far apart while still achieving ultra-low NOx emissions levels.

Why Choose Zeeco?

Zeeco leads today's global market in the design of combustion equipment. Our engineers have the experience, knowledge, and tools to properly design your burner equipment. Zeeco's burners have been operating around the globe for more than 40 years. Our philosophy is to provide customers with superior quality, on-time shipments and competitive pricing, which is the cornerstone of our success. Let us put our experience to work for you. Call or email us today to learn more about the full line of ZEECO® burner products and replacement components for your new or existing burner system.

Design Features

- Stable flame over a wide range of conditions
- High turndown of 5:1 or greater for most cases
- No stabilization metal used in the burner throat
- Low maintenance cost since tip mass is small and exposed into firebox less than 1" (25 mm)
- Compact design makes this burner a great choice for retrofit applications
- Compact flame shape
- Great heat flux profile
- Reasonable cost and great value
- Combustion air dampers are controlled by gears for precise control
- Bearings are used for the combustion air dampers for smooth, precise operation
- Plenum mounted or individual wind-box configurations
- 310 stainless steel (type HK) gas tips



GLSF Min-Emissions Burner

Design Information

Burner Model	GLSF Min-Emissions Burner
Fuels	Gas Only
Description	Round Flame Ultra-Low Emissions
NOx Reduction Method	Internal Flue Gas Recirculation by FREE JET Mixing
Predicted NOx Emissions Range (Natural Draft)	30 to 45 ppmv
Predicted NOx Emissions Range (600° F (316° C) Air Preheat)	50 to 80 ppmv
Combustion Air Induction	Natural, Forced, Induced, & Balanced Draft
Mounting Options	Up-fired and Side-fired
Natural Draft Heat Release Range	1 to 20 MMBtu/hr [0.293 to 5.860 MW]
Forced Draft Heat Release Range	1 to 50 MMBtu/hr [0.293 to 14.650 MW]
Turndown	5:1
Typical Excess Air Range	10 to 25%



The Zeeco Difference

By concentrating on what we do best, Zeeco has grown into a worldwide leader in combustion and environmental solutions. We are a privately held company whose ownership stays highly involved in daily operations, with upper management comprised of the world's leading combustion experts.

When you call Zeeco, we answer. When you make a request, you get a quick, efficient response. We are lean and efficient, able to make decisions quickly, without bureaucracy and red tape. Our sales, engineering, and purchasing groups work hand-in-hand to deliver highly competitive quotes and heroic turnaround times. We stand ready and willing to travel anywhere in the world to discuss upcoming projects firsthand, and to ensure that every existing project runs seamlessly.

Zeeco Headquarters
22151 East 91st Street
Broken Arrow, OK 74014

Learn more at zeeco.com

✉ sales@zeeco.com

☎ +1 (918) 258 8551



REGISTERED
ISO 9001:2015

Certification applies to
Zeeco Headquarters.



Visit zeeco.com/contact
for additional Global Location
contact information

GO
ZEECO

Choose to work with our
dedicated, flexible, and
innovative team, and you won't
be disappointed. Call or email
us today to request a quote or to
learn more about our proprietary
combustion systems.